

EXHIBIT A

SANITARY SEWER EASEMENT

A PARCEL OF LAND BEING A PORTION OF ADAMS COUNTY ASSESSOR PARCEL NUMBER 0156905400011 AND BEING A PORTION OF THE SOUTHEAST ONE-QUARTER OF SECTION 5, TOWNSHIP 1 SOUTH, RANGE 66 WEST OF THE 6TH PRINCIPLE MERIDIAN, CITY OF BRIGHTON, COUNTY OF ADAM, STATE OF COLORADO

BASIS OF BEARINGS: BEARINGS ARE BASED ON THE WEST LINE OF THE SOUTHEAST 1/4 OF SEC 5, T1S, R66W, 6TH P.M. AND IS ASSUMED TO BEAR, N00°24'15"W.

COMMENCING AT THE SOUTH QUARTER CORNER OF SAID SECTION 5, THENCE N89°19'53"E ALONG THE SOUTH LINE OF SAID SECTION 5, A DISTANCE OF 86.28 FEET AND N00°40'07"W, A DISTANCE OF 50.00 FEET TO A POINT ON THE NORTH RIGHT OF WAY LINE OF EAST BRIDGE STREET AND THE POINT OF BEGINNING;

THENCE S89°19'53"W ALONG SAID NORTH RIGHT OF WAY LINE, A DISTANCE OF 20.02 FEET;

THENCE N03°15'34"W, A DISTANCE OF 41.79 FEET;

THENCE N02°11'10"W, A DISTANCE OF 83.34 FEET;

THENCE N00°02'36"E, A DISTANCE OF 58.12 FEET;

THENCE N00°48'18"W, A DISTANCE OF 27.40 FEET;

THENCE N00°47'41"W, A DISTANCE OF 75.78 FEET;

THENCE N02°29'09"W, A DISTANCE OF 12.24 FEET;

THENCE N01°41'30"W, A DISTANCE OF 108.02 FEET;

THENCE N02°11'07"W, A DISTANCE OF 109.49 FEET;

THENCE N89°33'05"E, A DISTANCE OF 162.46 FEET;

THENCE S51°16'47"E, A DISTANCE OF 53.46 FEET;

THENCE N89°18'50"E, A DISTANCE OF 108.87 FEET;

THENCE N26°40'43"E, A DISTANCE OF 36.55 FEET;

THENCE N89°54'26"E, A DISTANCE OF 122.96 FEET;

THENCE N82°56'38"E, A DISTANCE OF 187.92 FEET TO A POINT ON THE EAST LINE OF SAID ASSESSOR PARCEL NUMBER 0156905400011;

THENCE S00°41'44"E ALONG SAID EAST LINE, A DISTANCE OF 20.12 FEET;

THENCE S82°56'38"W, A DISTANCE OF 186.91 FEET;

SHEET 1 OF 3

THENCE S89°54'26"W, A DISTANCE OF 111.86 FEET;
THENCE S26°40'43"W, A DISTANCE OF 36.40 FEET;
THENCE S89°18'50"W, A DISTANCE OF 128.20 FEET;
THENCE N51°16'47"W, A DISTANCE OF 53.51 FEET;
THENCE S89°33'05"W, A DISTANCE OF 134.73 FEET;
THENCE S02°11'07"E, A DISTANCE OF 88.96 FEET;
THENCE S01°41'30"E, A DISTANCE OF 107.97 FEET;
THENCE S02°29'09"E, A DISTANCE OF 12.39 FEET;
THENCE S00°47'41"E, A DISTANCE OF 76.07 FEET;
THENCE S00°48'18"E, A DISTANCE OF 27.55 FEET;
THENCE S00°02'36"W, A DISTANCE OF 57.88 FEET;
THENCE S02°11'10"E, A DISTANCE OF 82.76 FEET;
THENCE S03°15'34"E, A DISTANCE OF 42.50 FEET; TO THE POINT OF BEGINNING.
PARCEL CONTAINS 23,359 SQUARE FEET OR 0.536 ACRES, MORE OR LESS.

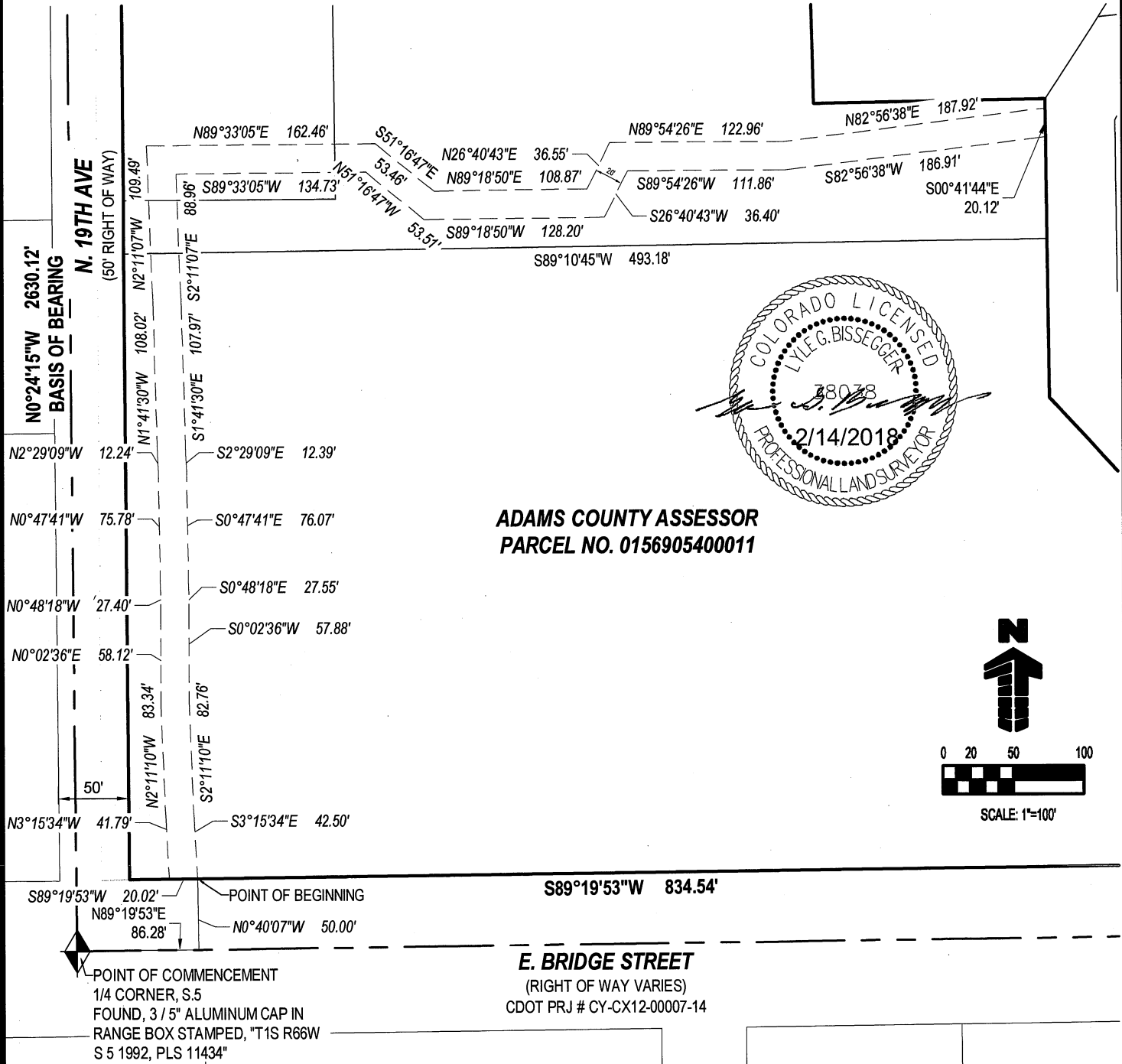
EXHIBIT B IS ATTACHED HERETO AND IS ONLY INTENDED TO DEPICT EXHIBIT A - LEGAL DESCRIPTION. IN THE EVENT THAT EXHIBIT A CONTAINS AN AMBIGUITY, EXHIBIT B MAY BE USED TO RESOLVE SAID AMBIGUITY.

PREPARED FOR AND ON BEHALF OF GALLOWAY
BY LYLE G. BISSEGER, PLS# 38038



EXHIBIT B

SANITARY SEWER EASEMENT IN THE SOUTHEAST QUARTER OF SECTION 5, T1S, R66W OF THE 6TH P.M. CITY OF BRIGHTON, COUNTY OF ADAMS, STATE OF COLORADO



**EXHIBIT B
SANITARY SEWER EASEMENT**
1931 E. BRIGHTON ST.
CITY OF BRIGHTON, COUNTY OF ADAMS, COLORADO
SHEET 3 OF 3

Project No:	AYA004
Drawn By:	JJA
Checked By:	LGB
Date:	02/09/18

Galloway
Planning. Architecture. Engineering.
6162 S. Willow Drive, Suite 320
Greenwood Village, CO 80111
303.770.8884 O
www.gallowayUS.com
©2017, Galloway & Company, Inc. All Rights Reserved