

EXHIBIT "A"

LEGAL DESCRIPTION

A PARCEL OF LAND LOCATED IN SECTION 14, TOWNSHIP 3 SOUTH, RANGE 64 WEST OF THE SIXTH PRINCIPAL MERIDIAN; COUNTY OF ADAMS, STATE OF COLORADO; BEING MORE PARTICULARLY DESCRIBED AS FOLLOWS:

BASIS OF BEARINGS:

THE SOUTH LINE OF THE SOUTHWEST QUARTER OF SAID SECTION 14, TOWNSHIP 3 SOUTH, RANGE 64 WEST OF THE SIXTH PRINCIPAL MERIDIAN, MONUMENTED AT THE SOUTH QUARTER CORNER OF SAID SECTION 14 BY A 1" AXLE IN RANGE BOX AND AT THE SOUTHWEST CORNER OF SAID SECTION 14 BY A NO. 6 REBAR WITH AN 3-1/4" ALUMINUM CAP STAMPED "LS 25381 2004", BEING ASSUMED TO BEAR NORTH 89°46'05" WEST, A DISTANCE OF 2654.41'.

COMMENCING AT THE SOUTH QUARTER CORNER OF SAID SECTION 14;

THENCE NORTH 05°42'34" EAST, A DISTANCE OF 1566.44 TO THE **POINT OF BEGINNING**.

THENCE NORTH 00°35'01" WEST, A DISTANCE OF 15.00 FEET;

THENCE NORTH 89°24'59" EAST, A DISTANCE OF 15.00 FEET;

THENCE SOUTH 00°35'01" EAST, A DISTANCE OF 1.04 FEET;

THENCE NORTH 89°24'59" EAST, A DISTANCE OF 98.72 FEET TO THE BEGINNING OF A TANGENT CURVE CONCAVE NORTHWESTERLY HAVING A RADIUS OF 16.50 FEET;

THENCE NORTHEASTERLY ALONG SAID CURVE THROUGH A CENTRAL ANGLE OF 89°57'59", AN ARC LENGTH OF 25.91 FEET;

THENCE NORTH 00°33'01" WEST, A DISTANCE OF 431.74 FEET TO THE BEGINNING OF A TANGENT CURVE CONCAVE SOUTHWESTERLY HAVING A RADIUS OF 14.50 FEET;

THENCE NORTHWESTERLY ALONG SAID CURVE THROUGH A CENTRAL ANGLE OF 90°05'17", AN ARC LENGTH OF 22.80 FEET;

THENCE SOUTH 89°21'43" WEST, A DISTANCE OF 156.26 FEET;

THENCE NORTH 00°38'17" WEST, A DISTANCE OF 63.45 FEET;

THENCE SOUTH 89°21'43" WEST, A DISTANCE OF 2.50 FEET;

THENCE NORTH 00°38'17" WEST, A DISTANCE OF 15.00 FEET;

THENCE NORTH 89°21'43" EAST, A DISTANCE OF 15.00 FEET;

THENCE SOUTH 00°38'17" EAST, A DISTANCE OF 15.00 FEET;

THENCE SOUTH 89°21'43" WEST, A DISTANCE OF 2.50 FEET;

THENCE SOUTH 00°38'17" EAST, A DISTANCE OF 53.45 FEET;

THENCE NORTH 89°21'43" EAST, A DISTANCE OF 146.26 FEET TO THE BEGINNING OF A TANGENT CURVE CONCAVE SOUTHWESTERLY HAVING A RADIUS OF 24.50 FEET;

THENCE SOUTHEASTERLY ALONG SAID CURVE THROUGH A CENTRAL ANGLE OF 90°05'17", AN ARC LENGTH OF 38.52 FEET;

THENCE SOUTH 00°33'01" EAST, A DISTANCE OF 431.74 FEET TO THE BEGINNING OF A TANGENT CURVE CONCAVE NORTHWESTERLY HAVING A RADIUS OF 26.50 FEET;

THENCE SOUTHWESTERLY ALONG SAID CURVE THROUGH A CENTRAL ANGLE OF 89°57'59", AN ARC LENGTH OF 41.61 FEET;

THENCE SOUTH 89°24'59" WEST, A DISTANCE OF 98.72 FEET;

THENCE SOUTH 00°35'01" EAST, A DISTANCE OF 3.96 FEET;

THENCE SOUTH 89°24'59" WEST, A DISTANCE OF 15.00 FEET TO THE **POINT OF BEGINNING**.

CONTAINING AN AREA OF 0.195 ACRES, (8,496 SQUARE FEET), MORE OR LESS.

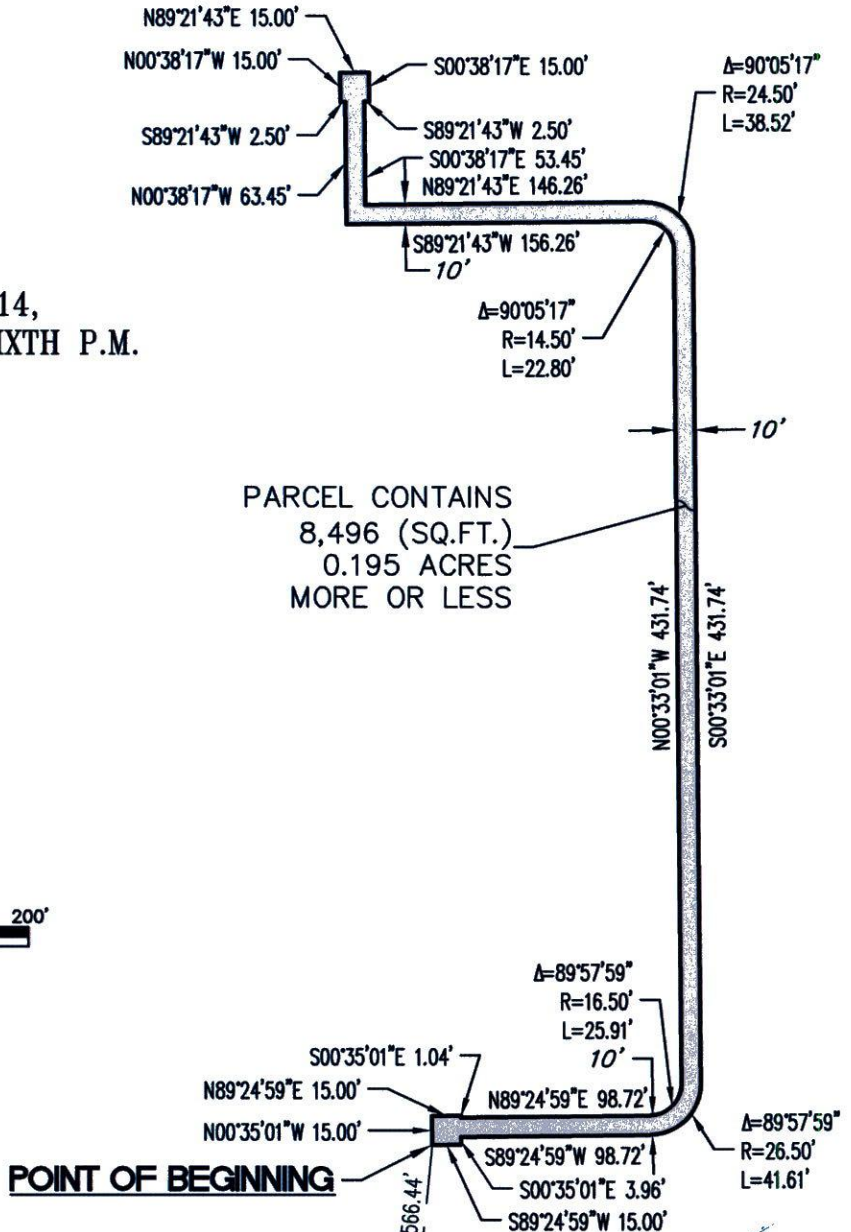
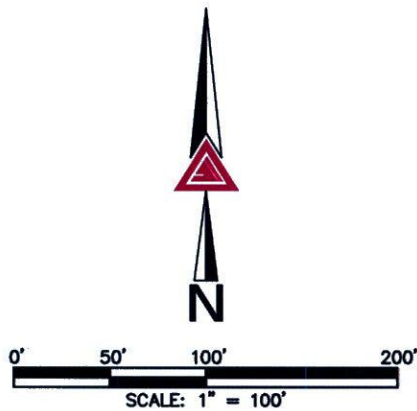
EXHIBIT ATTACHED AND MADE A PART HEREOF.



DEREK S. BROWN PLS NO. 38064
FOR AND ON BEHALF OF AZTEC CONSULTANTS, INC.
300 E. MINERAL AVE., SUITE 1, LITTLETON, CO 80122
303-713-1898

ILLUSTRATION TO EXHIBIT A

SECTION 14,
T.3S., R.64W., SIXTH P.M.

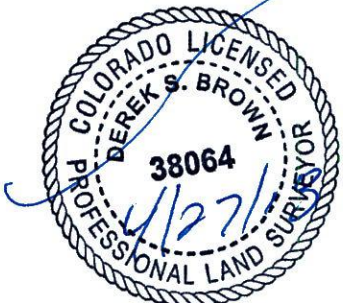


SW CORNER SECTION 14,
T.3S., R.64W., 6TH P.M.
FOUND NO. 6 REBAR
WITH 3-1/4" ALUMINUM CAP
STAMPED "LS25381 2004"

POINT OF COMMENCEMENT

S 1/4 SECTION 14,
T.3S., R.64W., 6TH P.M.
FOUND 1" AXLE IN RANGE BOX

(BASIS OF BEARINGS)
N89°46'05"W 2654.41'
S. LINE, SW 1/4, SEC. 14, T.3S., R.64W., 6TH P.M.



NOTE: THIS DRAWING DOES NOT REPRESENT A MONUMENTED LAND SURVEY AND IS ONLY INTENDED TO DEPICT THE ATTACHED LEGAL DESCRIPTION.

PATH:
DWG NAME: XCEL PSCO EASEMENT EXHIBIT
DWG: CWB CHK: DSB
DATE: 4/25/2018
SCALE: 1" = 100'



Aztec
CONSULTANTS, INC.

N:\104517-01 - Reaction Engines\Drawg\Exhibits

300 East Mineral Ave,
Suite 1
Littleton, Colorado 80122
Phone: (303)713-1898
Fax: (303)713-1897
www.aztecconsultants.com

PSCO EASEMENT
SECTION 14, T.3S., R.64W., SIXTH P.M.
ADAMS COUNTY, COLORADO

JOB NUMBER 104517-01

3 OF 3 SHEETS