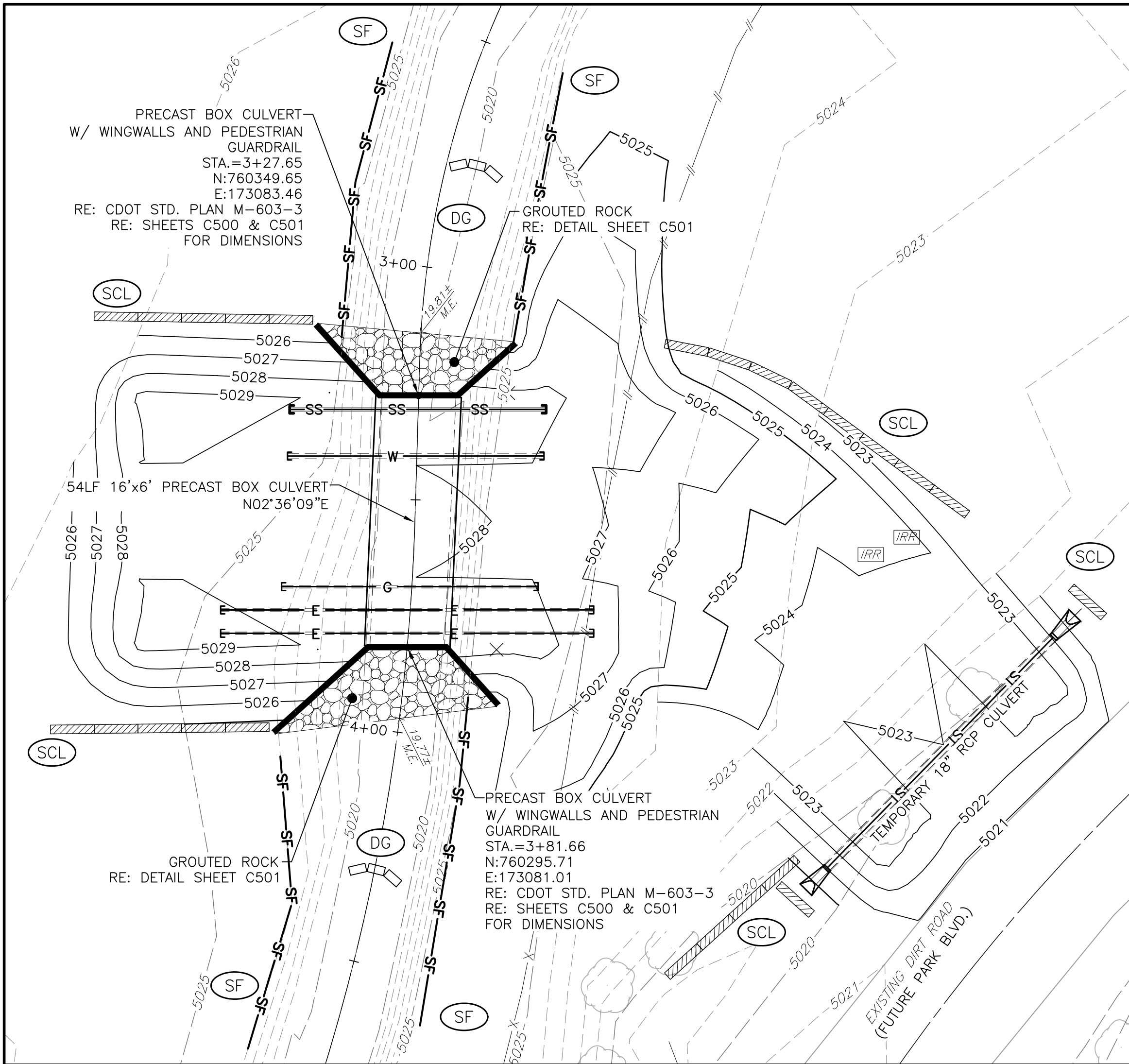
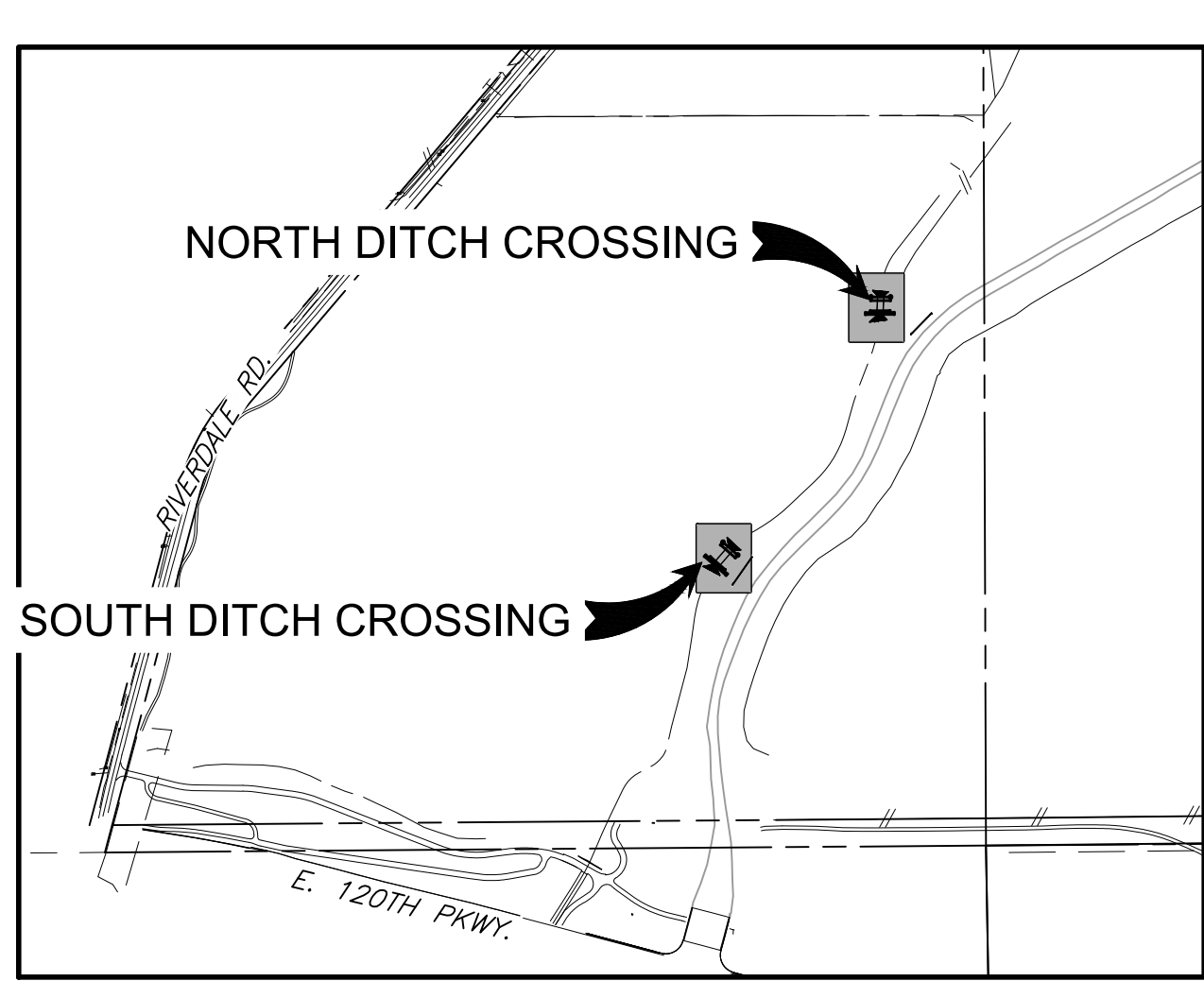


SOUTH IRRIGATION DITCH CROSSING  
SCALE: 1"=20'



NORTH IRRIGATION DITCH CROSSING  
SCALE: 1"=20'

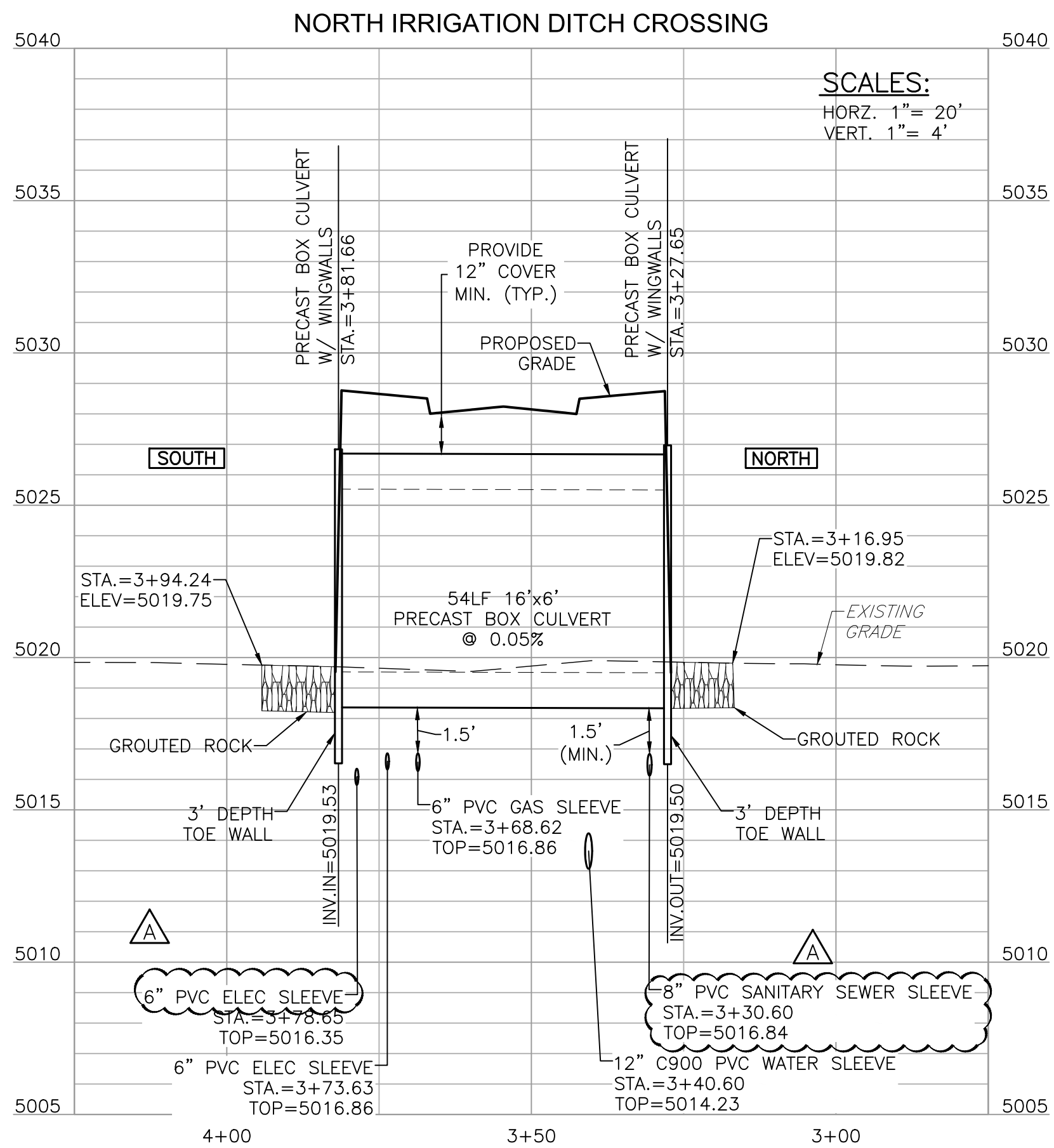
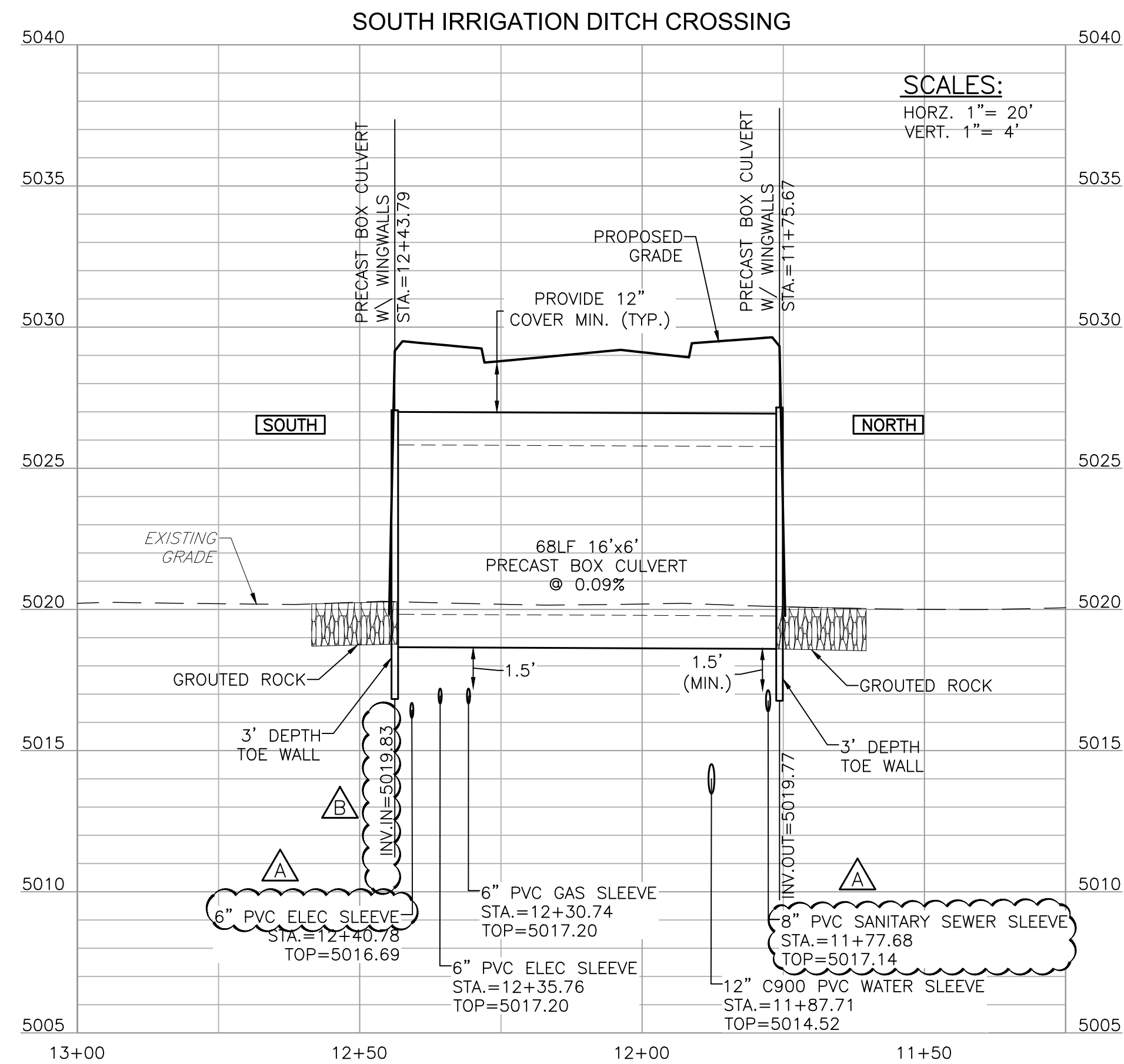


KEYMAP  
SCALE: 1"=500'

LEGEND	
	SILT FENCE (SF)
	STABILIZED STAGING AREA (SSA)
	SEDIMENT CONTROL LOG (SCL)
	DITCH GUARD (DG)
	EROSION CONTROL BLANKET (ECB)
	LIMITS OF CONSTRUCTION (LOC)

NOTES:

- SEE SHEETS C100 AND C101 FOR ADDITIONAL NOTES, ABBREVIATIONS AND LEGEND.
- ALL SPOTS ARE TO FINISHED GRADE UNLESS NOTED OTHERWISE.
- SEE SHEET C310 THRU C312 FOR EROSION CONTROL DETAILS. REFER TO URBAN DRAINAGE FOR ADDITIONAL INFORMATION.
- ULTIMATE LOCATION OF CONSTRUCTION FENCING, STAGING AREAS AND CONCRETE WASHOUT (IF REQUIRED) TO BE DETERMINED BY CONTRACTOR AND COORDINATED WITH ADAMS COUNTY PRIOR TO CONSTRUCTION.
- FOR DITCH CROSS SECTIONS, REFER TO SHEET C401.
- FOR UTILITY SLEEVES, REFER TO SHEET C400.
- MINIMUM EXCAVATION BELOW BOX CULVERT SHALL BE TO COMPETENT SUBGRADE SOILS AS DETERMINED BY A GEOTECHNICAL ENGINEER. BACKFILL WITH CLASS 1 STRUCTURAL FILL. MINIMUM BEDDING THICKNESS EQUALS 3-INCHES. CDOT CLASS 1 STRUCTURAL FILL CAN BE USED AS BEDDING.
- BOX CULVERT SHALL BE PRECAST DESIGNED IN ACCORDANCE WITH CDOT DETAIL M603-3.
- GRADING SHOWN IS TEMPORARY. FINAL GRADING DESIGN WILL BE COMPLETED AS PART OF THE ANIMAL SHELTER AND PARK BOULEVARD PROJECTS.



BASIS OF BEARING:

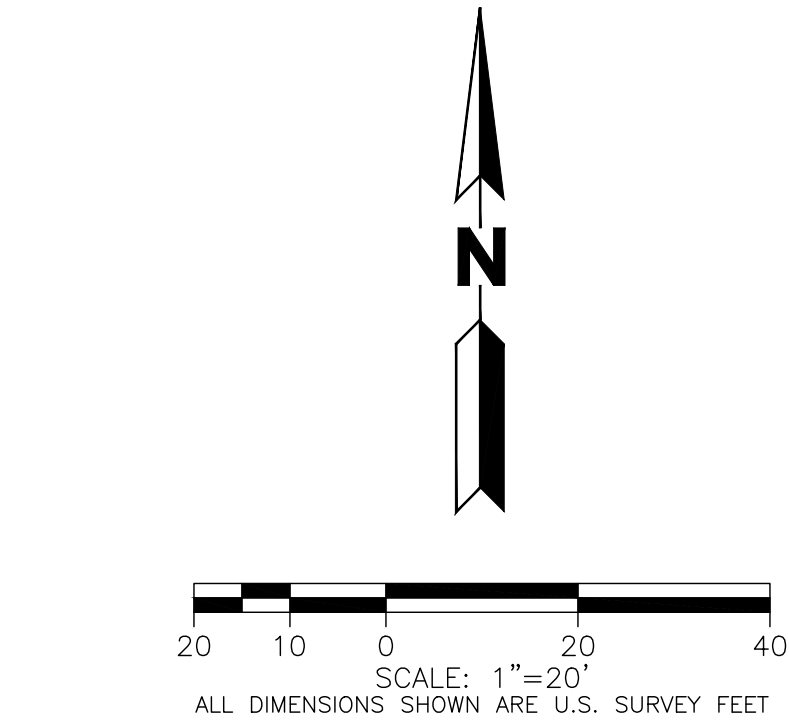
BEARINGS ARE BASED ON THE SOUTHERLY LINE OF SOUTHEAST QUARTER OF SECTION 33 ASSUMED TO BEAR N89°33'12"E AND BEING MONUMENTED BY A FOUND 3-1/4" ALUMINUM CAP IN RANGE BOX PLS #36053 AT THE SOUTH QUARTER CORNER AND A FOUND 2-1/4" ALUMINUM CAP PLS #36053 AT THE SOUTHEAST CORNER.

BENCHMARK:

ELEVATIONS ARE BASED ON THE ADAMS COUNTY VERTICAL CONTROL NETWORK BM #95.1064 AN ADAMS COUNTY 3-1/4" ALUMINUM SURVEY MARK DISK STAMPED "95.0164 1995 1S67W S34" SECURED TO THE TOP OF A 5/8" FINNED ALUMINUM ROD ENCASED IN A 6"PVC PIPE WITH A LOGO CAP SET IN A CONCRETE POST 0.2' BELOW GROUND LEVEL. THE STATION IS LOCATED EAST OF RIVERDALE ROAD, NORTHWEST OF THE SOUTH PLATTE RIVER, NORTH OF THE INTERSECTION OF HENDERSON ROAD AND 132 FEET SOUTHEAST OF THE CENTER LINE OF THE FAIR GROUND ENTRANCE ROAD.

ELEVATION = 5011.88 FEET (NAVD 1988) DATUM.

EXISTING TOPOGRAPHY SHOWN WAS TAKEN FROM THE DESIGN SURVEY COMPLETED BY MARTIN/MARTIN, INC., JANUARY 30, 2017.



CALL 811 2-BUSINESS DAYS IN ADVANCE BEFORE YOU DIG, GRADE OR EXCAVATE FOR MARKING OF UNDERGROUND MEMBER UTILITIES

MARTIN/MARTIN ASSUMES NO RESPONSIBILITY FOR UTILITY LOCATIONS. THE UTILITIES SHOWN ON THIS DRAWING HAVE BEEN PLOTTED FROM (PROVIDED) ASCE (38) UTILITY QUALITY LEVEL D (Q<sub>6</sub>) AVAILABLE INFORMATION. IT IS, HOWEVER, THE CONTRACTORS RESPONSIBILITY TO FIELD VERIFY THE SIZE, MATERIAL, HORIZONTAL AND VERTICAL LOCATION OF ALL UTILITIES (DEPICTED OR NOT DEPICTED) PRIOR TO THE COMMENCEMENT OF ANY CONSTRUCTION.

RIVERDALE ANIMAL SHELTER  
DITCH CROSSING

CULVERT PLAN AND PROFILE AND  
EROSION CONTROL PLAN

No.	Issue / Revision	Date	Name
1	COUNTY SUBMITTAL #1	08/08/18	CACS
2	ISSUED FOR CONSTRUCTION	09/05/18	CACS

Job Number	16.0747
Project Manager	C. CLARK-SUPINSKI
Design By	C. CLARK-SUPINSKI
Drawn By	D. BEHM
Principal in Charge	M. SCHLAGETER

Sheet Number:

C300

MARTIN/MARTIN  
CONSULTING ENGINEERS  
12499 WEST COLFAX AVENUE, LAKEWOOD, COLORADO 80215  
MAIN 303.431.6100 MARTINMARTIN.COM



FOR CONSTRUCTION