

ALLEYS THAT ARE HATCHED AND WITHIN 26' ACCESS EASEMENT

PRIVATE STORM SEWER LINE

STORM SEWER LINE W/ FES DISCHARGING TO  
DETENTION POND

STORM SEWER IMPROVEMENTS SHALL INCLUDE THE FOLLOWING:

- NEW 30-INCH RCP STORM PIPE
- NEW 30-INCH FLARED END SECTION
- NEW CONCRETE FOREBAY

ELEVATIONS ARE BASED UPON NGS BENCHMARK Z 452 (PID DJ8175), HAVING AN ELEVATION OF 5392.96 FEET (NAVD 88). PROJECT BENCHMARK IS A COPPER PLUG SET ON TOP OF CONCRETE CURB HEAD 18 FEET SOUTHWEST OF THE NORTHEAST CORNER OF THE GOODWILL INDUSTRIES PROPERTY. ELEVATION: 5258.26 FEET.

BEARINGS ARE BASED UPON THE NORTH LINE OF THE NORTHEAST QUARTER OF SECTION 5, TOWNSHIP 3 SOUTH, RANGE 68 WEST OF THE 6TH PRINCIPAL MERIDIAN. THE NORTHWEST CORNER OF THE NORTHEAST QUARTER IS MONUMENTED WITH A 3" ALUMINUM CAP IN MONUMENT BOX STAMPED LS 23053. THE NORTHEAST CORNER OF THE NORTHEAST QUARTER IS MONUMENTED WITH A 3.25" ALUMINUM CAP IN MONUMENT BOX STAMPED LS 17668. THE LINE BEARS NORTH 89°37'42" EAST BASED UPON THE COLORADO COORDINATE SYSTEM OF 1983, NORTH ZONE.



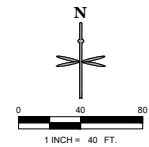
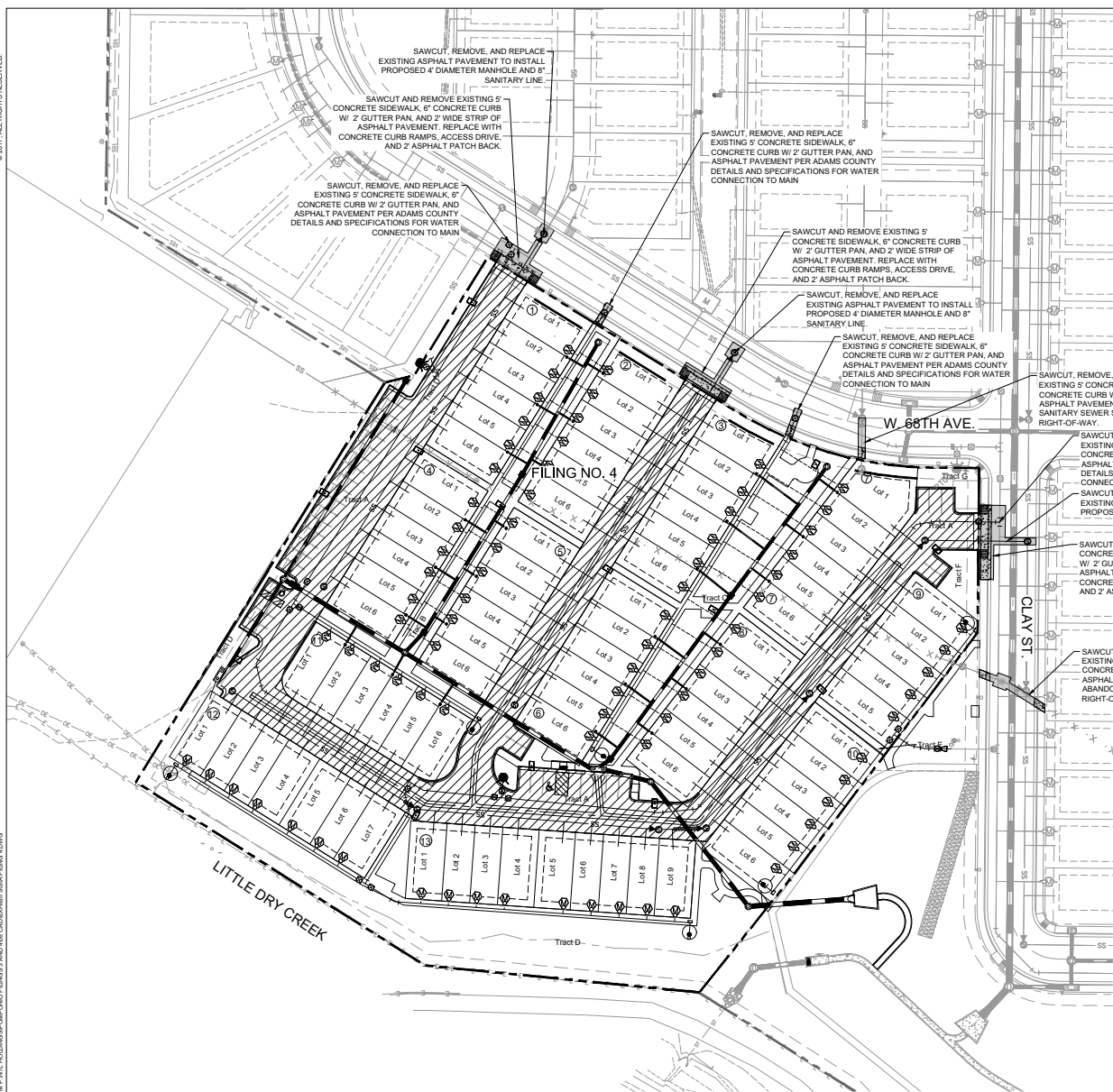
Know what's below.  
**Call** before you dig.

CALL UTILITY NOTIFICATION  
CENTER OF COLORADO

1-800-922-1987 or 811

**CALL 3-BUSINESS DAYS (NOT INCLUDING INITIAL DAY OF CONTACT) IN ADVANCE BEFORE YOU DIG, GRADE, OR EXCAVATE FOR THE MARKING OF UNDERGROUND MEMBER UTILITIES.**

SUBDIVISION IMPROVEMENT AGREEMENT	
<div> <div>  <div> <b>EES</b>            ENGINEERING &amp; ENVIRONMENTAL SERVICES            10010 E. 12th Ave., Suite 300            Denver, CO 80246            303.757.1987 / 303.757.1988         </div> </div> <div>  </div> </div>	
<div> <div> <div>PROJECT NO.</div> <div>DESIGNED BY</div> <div>DRAWN BY</div> <div>DATE</div> </div> <div> <div>PTH804</div> <div>JN</div> <div>A</div> <div>12/11/20</div> </div> </div>	
<div> <div> <div>POMPONIO TERRACE FILING 4</div> <div>EXHIBIT B1 - PHASE I PUBLIC STORMWATER IMPROVEMENTS</div> </div> </div>	
<div> <div>REVISION</div> <div>No.</div> <div>BY</div> <div>DATE</div> </div>	<div> <div> </div> <div> </div> <div> </div> <div> </div> </div>



① BLOCK NUMBER


## CRESTVIEW WATER AND SANITATION DISTRICT IMPROVEMENTS


\_\_\_\_\_ PUBLIC WATERMAIN  
\_\_\_\_\_ **SS** \_\_\_\_\_ PUBLIC SANITARY SEWER LINE

### DISTRICT IMPROVEMENTS, OWNED AND MAINTAINED BY METROPOLITAN DISTRICT

	ALLEYS THAT ARE HATCHED AND WITHIN 26' ACCESS EASEMENT
	PRIVATE SANITARY SEWER SERVICE LINE
	PRIVATE WATER SERVICE LINE
	PRIVATE 4" WATER LINE
	PRIVATE STORM SEWER LINE

**PUBLIC IMPROVEMENTS OWNED AND  
MAINTAINED BY ADAMS COUNTY**

 ASPHALT WORK TO BE COMPLETED IN PUBLIC RIGHT-OF-WAY

 CONCRETE WORK TO BE COMPLETED IN PUBLIC RIGHT-OF-WAY

## PHASE II PUBLIC ROADWAY IMPROVEMENTS NOTES

PUBLIC ROADWAY IMPROVEMENTS SHALL INCLUDE THE FOLLOWING TO ACCOMMODATE THE INSTALLATION OF WATER AND SANITARY LINE CONNECTIONS TO THE EXISTING MAINS:

- REMOVAL AND REPLACEMENT OF EXISTING CONCRETE CURB, GUTTER, AND SIDEWALK (INCL. SUBGRADE PREPARATION)
- SAWCUTTING AND PATCHING OF EXISTING ASPHALT PAVEMENT
- NEW CONCRETE CURB RAMPS
- NEW ALLEY CURB CUTS
- NO DRY UTILITIES

## PROJECT BENCHMARK

ELEVATIONS ARE BASED UPON NGS BENCHMARK Z 452 (PID DJ8175), HAVING AN ELEVATION OF 5392.96 FEET (NAVD 88). PROJECT BENCHMARK IS A COPPER PLUG SET ON TOP OF CONCRETE CURB HEAD 18 FEET SOUTHWEST OF THE NORTHEAST CORNER OF THE GOODWILL INDUSTRIES PROPERTY. ELEVATION: 5258.26 FEET.

## PROJECT BASIS OF BEARING

BEARINGS ARE BASED UPON THE NORTH LINE OF THE NORTHEAST QUARTER OF SECTION 3, TOWNSHIP 3 SOUTH, RANGE 61 WEST OF THE 6TH PRINCIPAL MERIDIAN. THE NORTHWEST CORNER OF THE NORTHEAST QUARTER IS MONUMENTED WITH A 3 1/2" ALUMINUM CAP IN MONUMENT BOX STAMPED LS 23053. THE NORTHEAST CORNER OF THE NORTHEAST QUARTER IS MONUMENTED WITH A 3 1/2" ALUMINUM CAP IN MONUMENT BOX STAMPED LS 17668. THE LINE BEARS NORTH 89°37'42" EAST BASED UPON THE COLORADO COORDINATE SYSTEM OF 1983. NORTH ZONE.



Know what's below.  
Call before you dig.

CALL UTILITY NOTIFICATION  
CENTER OF COLORADO

1-800-922-1987 or 811

**CALL 3-BUSINESS DAYS (NOT INCLUDING INITIAL DAY OF CONTACT) IN ADVANCE BEFORE YOU DIG, GRADE, OR EXCAVATE FOR THE MARKING OF UNDERGROUND MEMBER UTILITIES.**

SUBDIVISION IMPROVEMENT AGREEMENT		PROJECT NO. PTH004.0	
POMPONIO TERRACE FILING 4		DESIGNED BY: JN	
EXHIBIT B2 - PHASE II PUBLIC ROADWAY IMPROVEMENTS		DRAWN BY: AJ	
DATE: 12/11/2011			

**OPINION OF PROBABLE COST - CONCEPTUAL**  
**Pomponio Terrace Filing 4 - B1 - Probable Costs**

This estimate is prepared as a guide and is subject to possible changes. It has been prepared to a standard of accuracy that, to the best of our knowledge and judgment, is sufficient to satisfy our understanding of the purpose of this estimate. Entitlement and Engineering Solutions, Inc. (EES) makes no warranty, either expressed or implied, as to the accuracy of this estimate.



**Entitlement and Engineering Solutions, Inc.**  
**501 S. Cherry Street, Suite 300**  
**Glendale, CO 80246**

**Original Preparation:** 12/11/2018

**Revised:**

**Project:** Pomponio Terrace Filings 3 and 4

**Project Location:** Adams County, Colorado

**Project #:** PTH004.01

<b>STORM SEWER IMPROVEMENTS</b>	<b>Quantity</b>	<b>Unit Price</b>	<b>Unit</b>	<b>Unit Cost</b>
30-Inch RCP (Complete-In-Place)	68	\$140.00	LF	\$9,520.00
30-Inch FES	1	\$1,500.00	EA	\$1,500.00
Concrete Forebay	24	\$54.00	SY	\$1,296.00
Concrete Trickle Channel	73	\$65.00	LF	\$4,745.00
<b>TOTAL</b>				<b>\$17,061.00</b>

**OPINION OF PROBABLE COST - CONCEPTUAL**  
**Pomponio Terrace Filing 4 - B2 - Probable Costs**

This estimate is prepared as a guide and is subject to possible changes. It has been prepared to a standard of accuracy that, to the best of our knowledge and judgment, is sufficient to satisfy our understanding of the purpose of this estimate. Entitlement and Engineering Solutions, Inc. (EES) makes no warranty, either expressed or implied, as to the accuracy of this estimate.



**Entitlement and Engineering Solutions, Inc.**  
**501 S. Cherry Street, Suite 300**  
**Glendale, CO 80246**

**Original Preparation:** 12/11/2018

**Revised:**

**Project:** Pomponio Terrace Filings 3 and 4

**Project Location:** Adams County, Colorado

**Project #:** PTH004.01

<b>ROADWAY IMPROVEMENTS</b>	<b>Quantity</b>	<b>Unit Price</b>	<b>Unit</b>	<b>Unit Cost</b>
Removal of Curb, Gutter and Sidewalk	156	\$9.00	LF	\$1,406.53
Removal of Asphalt Mat (Planing)	163	\$3.00	SY	\$488.26
Aggregate Base Course (Class 6)	49	\$50.00	CY	\$2,442.29
Subgrade Preparation (12 Inch at Sidewalk and Road)	98	\$3.00	CY	\$293.19
Hot Mix Asphalt (Patching) (Asphalt)	163	\$26.00	SY	\$4,231.58
Concrete Sidewalk (5' Width)	23	\$70.00	SY	\$1,608.73
Concrete Curb Ramp	6	\$604.00	EA	\$3,624.00
6" Vertical Curb and Gutter (2' Pan)	41	\$25.00	LF	\$1,033.74
Alley Curb Cut/Access Drive	3	\$400.00	EA	\$1,200.00
Unclassified Excavation (Complete-In-Place)	1	\$1,500.00	LS	\$1,500.00
<b>TOTAL</b>				<b>\$17,828.32</b>

## OPINION OF PROBABLE COST - SUMMARY (CONCEPTUAL)

This estimate is prepared as a guide and is subject to possible changes. It has been prepared to a standard of accuracy that, to the best of our knowledge and judgment, is sufficient to satisfy our understanding of the purpose of this estimate. Entitlement and Engineering Solutions, Inc. (EES) makes no warranty, either expressed or implied, as to the accuracy of this estimate.



**Entitlement and Engineering Solutions, Inc.**  
**501 S. Cherry Street, Suite 300**  
**Glendale, CO 80246**

**Original Preparation:** 12/11/2018

**Revised:**

**Project:** Pomponio Terrace Filings 3 and 4

**Project Location:** Adams County, Colorado

**Project #:** PTH004.01

Filing 4	PROJECT TOTALS
Filing 4 Phase I Public Improvements Total	\$17,061
Filing 4 Phase II Public Improvements Total	\$17,828
Administration - 20% of Total	\$6,978
Inflation Per Year - 5% of Total	\$1,744
Filings 4 Grand Total	\$43,612